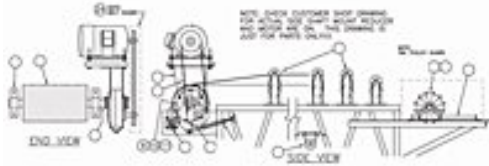


**Stephens Mfg. Co., Inc.**

711 West 4th Street

Tompkinsville, KY 42167

**Toll Free:** 800-626-0200 • **Phone:** 270-487-6774 • **Fax:** 270-487-8368**E-Mail:** [info@stephensmfg.com](mailto:info@stephensmfg.com) • **Web site:** [www.stephensmfg.com](http://www.stephensmfg.com)**24" and 30" x 36' Long Transfer Conveyor**

36' conveyors were a standard for stationary plants for many years. Many conveyors may vary from 33' – 41'. However many of the components remain the same. Stephens should be able to confirm your exact parts if you have your Print# or Serial #. The attached sketches should give a close reference for most conveyors near the 36' length.